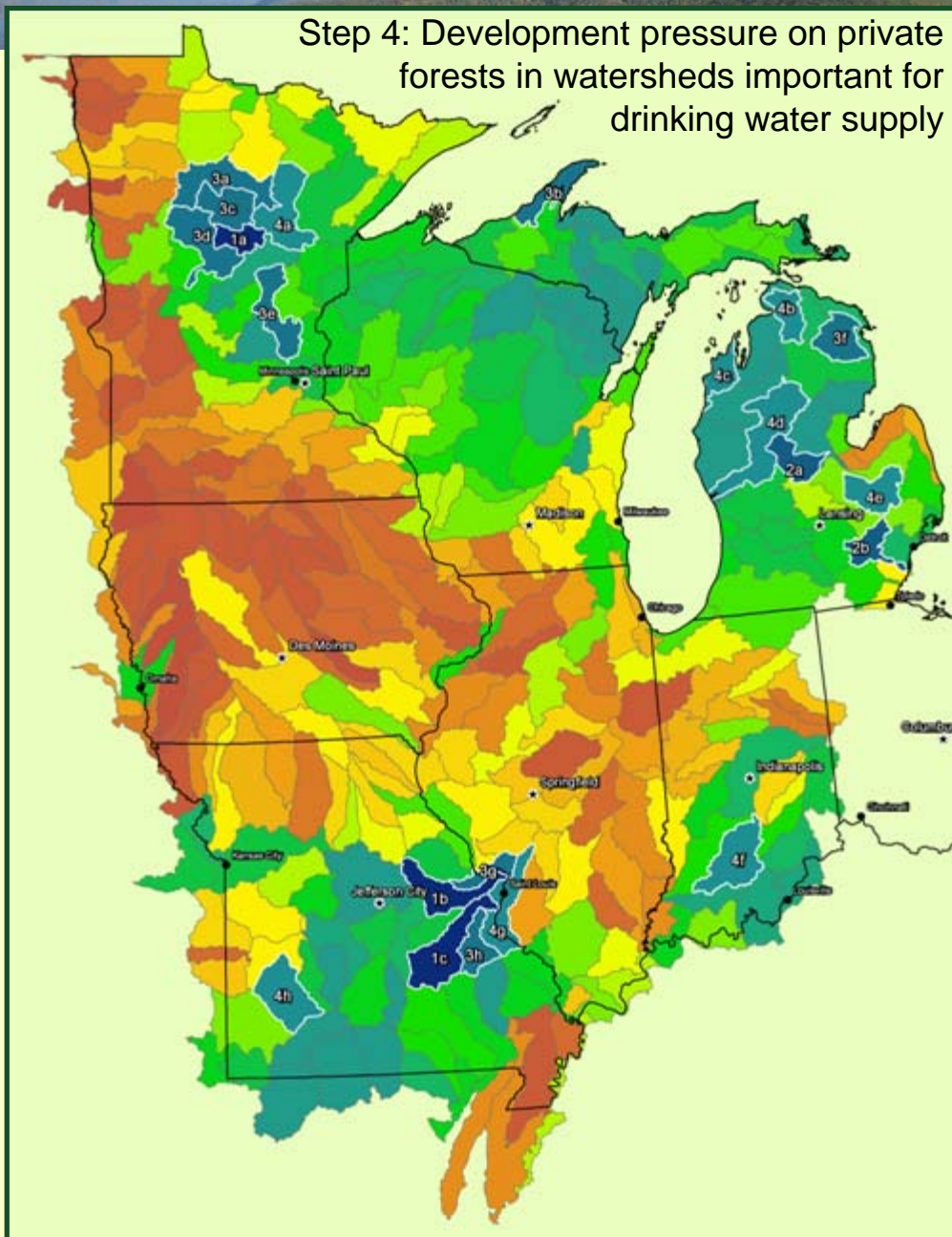


Step 4: Development pressure on private forests in watersheds important for drinking water supply



Top Ranking Watersheds

| Watershed              | HUC      | Step 4 Score | Map # |
|------------------------|----------|--------------|-------|
| Pine                   | 07010105 | 30           | 1a    |
| Lower Missouri         | 10300200 | 30           | 1b    |
| Meramec                | 07140102 | 30           | 1c    |
| Pine                   | 04080202 | 28           | 2a    |
| Huron                  | 04090005 | 28           | 2b    |
| Mississippi Headwaters | 07010101 | 27           | 3a    |
| Keweenaw Peninsula     | 04020103 | 27           | 3b    |
| Leech Lake             | 07010102 | 27           | 3c    |
| Crow Wing              | 07010106 | 27           | 3d    |
| Rum                    | 07010207 | 27           | 3e    |
| Thunder Bay            | 04070006 | 27           | 3f    |
| Peruque-Piasa          | 07110009 | 27           | 3g    |
| Big                    | 07140104 | 27           | 3h    |
| Prairie-Willow         | 07010103 | 26           | 4a    |
| Cheboygan              | 04070004 | 26           | 4b    |
| Betsie-Platte          | 04060104 | 26           | 4c    |
| Muskegon               | 04060102 | 26           | 4d    |
| Flint                  | 04080204 | 26           | 4e    |
| Lower East Fork White  | 05120208 | 26           | 4f    |
| Cahokia-Joachim        | 07140101 | 26           | 4g    |
| Sac                    | 10290106 | 26           | 4h    |

Paul E. Gregory and Paul K. Barten

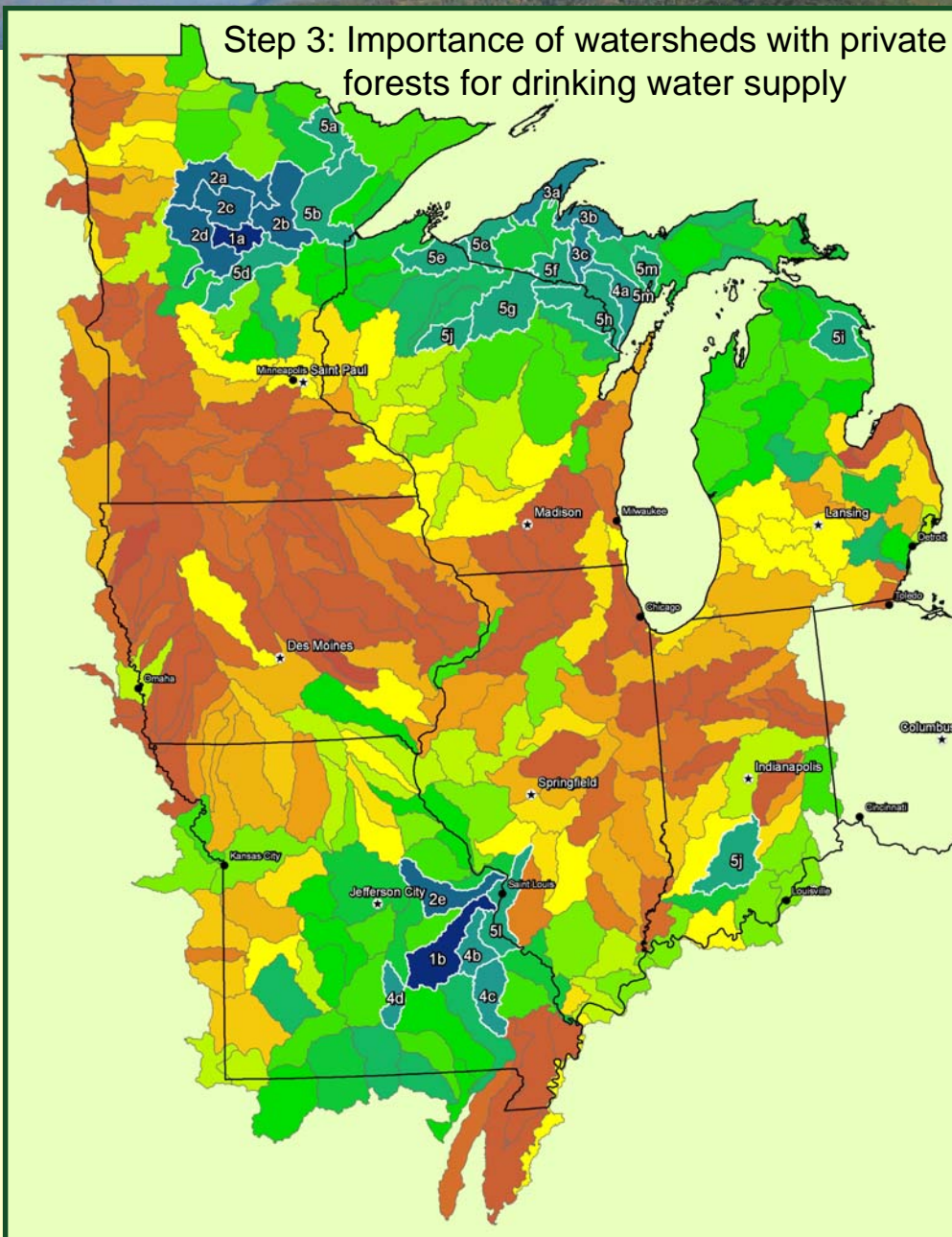
University of Massachusetts Amherst – USDA Forest Service

[www.forest-to-faucet.org](http://www.forest-to-faucet.org)

November 2008



Step 3: Importance of watersheds with private forests for drinking water supply



Top Ranking Watersheds

| Watershed              | HUC      | Step 3 Score | Map # |
|------------------------|----------|--------------|-------|
| Pine                   | 07010105 | 24           | 1a    |
| Meramec                | 07140102 | 24           | 1b    |
| Mississippi Headwaters | 07010101 | 22           | 2a    |
| Prairie-Willow         | 07010103 | 22           | 2b    |
| Leech Lake             | 07010102 | 22           | 2c    |
| Crow Wing              | 07010106 | 22           | 2d    |
| Lower Missouri         | 10300200 | 22           | 2e    |
| Keweenaw Peninsula     | 04020103 | 21           | 3a    |
| Dead-Kelsey            | 04020105 | 21           | 3b    |
| Michigamme             | 04030107 | 21           | 3c    |
| Cedar-Ford             | 04030109 | 20           | 4a    |
| Big                    | 07140104 | 20           | 4b    |
| Upper St. Francis      | 08020202 | 20           | 4c    |
| Big Piney              | 10290202 | 20           | 4d    |
| Vermilion              | 09030002 | 19           | 5a    |
| St. Louis              | 04010201 | 19           | 5b    |
| Black-Presque Isle     | 04020101 | 19           | 5c    |
| Elk-Nokasippi          | 07010104 | 19           | 5d    |
| Bad-Montreal           | 04010302 | 19           | 5e    |
| Brule                  | 04030106 | 19           | 5f    |
| Upper Wisconsin        | 07070001 | 19           | 5g    |
| Menominee              | 04030108 | 19           | 5h    |
| Thunder Bay            | 04070006 | 19           | 5i    |
| Jump                   | 07050004 | 19           | 5j    |
| Lower East Fork White  | 05120208 | 19           | 5j    |
| Cahokia-Joachim        | 07140101 | 19           | 5l    |
| Tacoosh-Whitefish      | 04030111 | 19           | 5m    |

Paul E. Gregory and Paul K. Barten

University of Massachusetts Amherst – USDA Forest Service

[www.forest-to-faucet.org](http://www.forest-to-faucet.org)

November 2008

