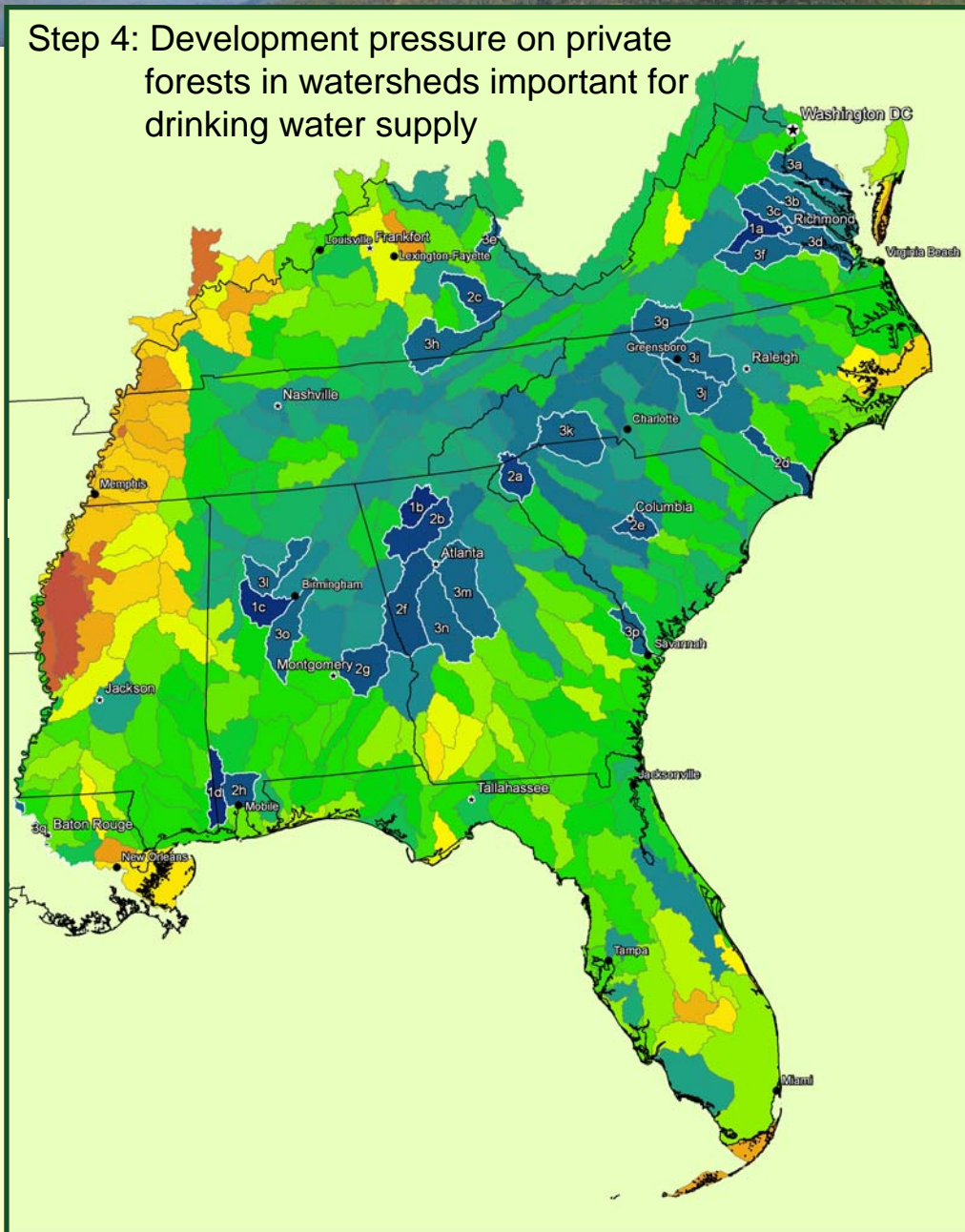


Step 4: Development pressure on private forests in watersheds important for drinking water supply



Top Ranking Watersheds

Watershed	HUC	Step 4 Score	Map #
Middle James-Willis	02080205	37	1a
Coosawattee	03150102	37	1b
Upper Black Warrior	03160112	37	1c
Escatawpa	03170008	37	1d
Seneca	03060101	36	2a
Etowah	03150104	36	2b
North Fork Kentucky	05100201	35	2c
Lower Cape Fear	03030005	35	2d
Congaree	03050110	35	2e
Middle Chattahoochee-Lake Harding	03130002	35	2f
Lower Tallapoosa	03150110	35	2g
Mobile - Tensaw	03160204	35	2h
Lower Potomac	02070011	34	3a
Mattaponi	02080105	34	3b
Pamunkey	02080106	34	3c
Lower James	02080206	34	3d
Big Sandy	05070204	34	3e
Appomattox	02080207	34	3f
Upper Dan	03010103	34	3g
Upper Cumberland	05130101	34	3h
Haw	03030002	34	3i
Deep	03030003	34	3j
Upper Broad	03050105	34	3k
Mulberry	03160109	34	3l
Upper Ocmulgee	03070103	34	3m
Upper Flint	03130005	34	3n
Cahaba	03150202	34	3o
Lower Savannah	03060109	34	3p
Lower Mississippi-Baton Rouge	08070100	34	3q

Paul E. Gregory and Paul K. Barten

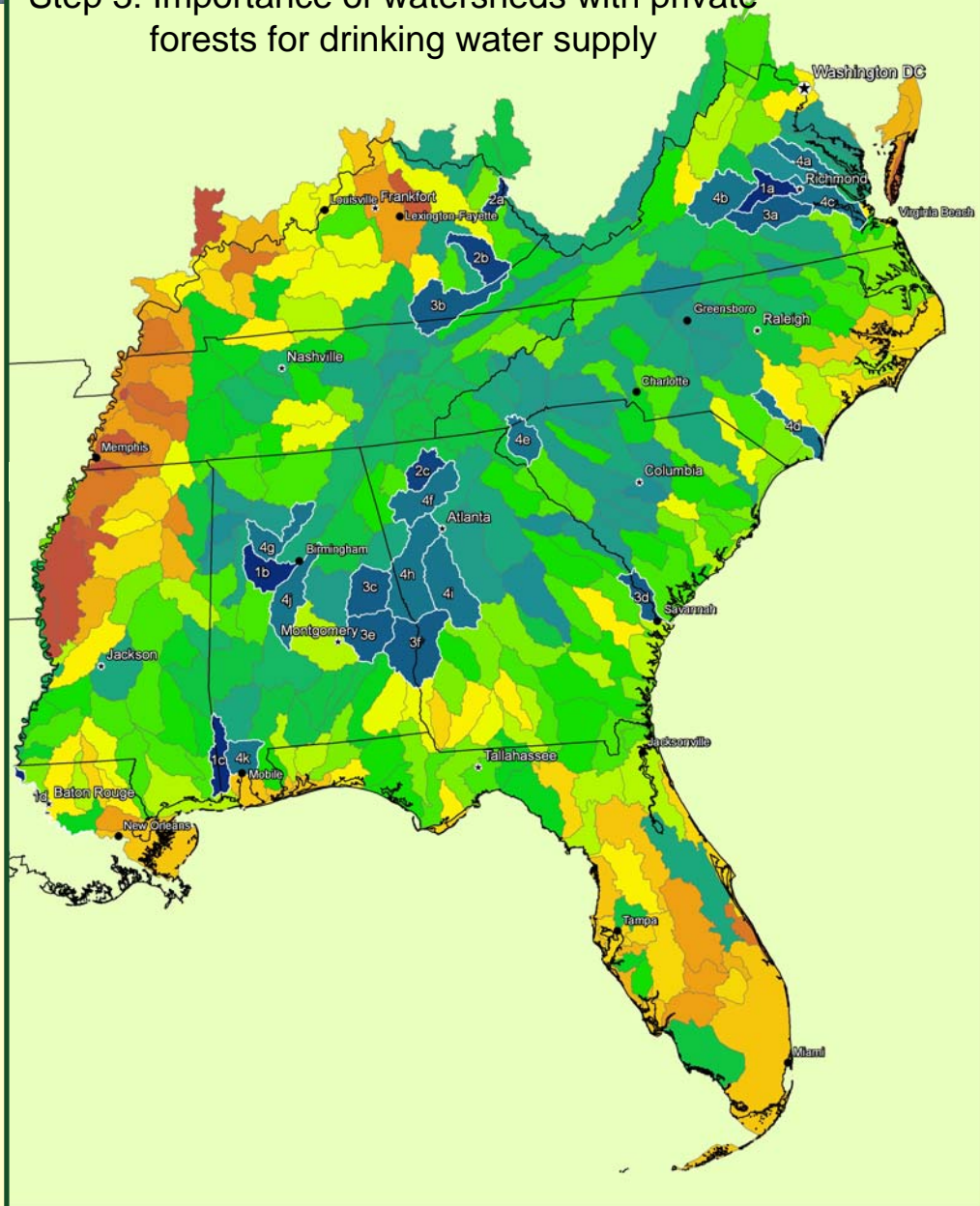
University of Massachusetts Amherst – USDA Forest Service

www.forest-to-faucet.org

November 2008



Step 3: Importance of watersheds with private forests for drinking water supply



Top Ranking Watersheds

Watershed	HUC	Step 3 Score	Map #
Middle James-Willis	02080205	29	1a
Upper Black Warrior	03160112	29	1b
Escatawpa	03170008	29	1c
Lower Mississippi-Baton Rouge	08070100	29	1d
Big Sandy	05070204	28	2a
North Fork Kentucky	05100201	28	2b
Coosawattee	03150102	28	2c
Appomattox	02080207	27	3a
Upper Cumberland	05130101	27	3b
Middle Tallapoosa	03150109	27	3c
Lower Savannah	03060109	27	3d
Lower Tallapoosa	03150110	27	3e
Middle Chattahoochee-Walter F. George R	03130003	27	3f
Mattaponi	02080105	26	4a
Middle James-Buffalo	02080203	26	4b
Lower James	02080206	26	4c
Lower Cape Fear	03030005	26	4d
Seneca	03060101	26	4e
Etowah	03150104	26	4f
Mulberry	03160109	26	4g
Middle Chattahoochee-Lake Harding	03130002	26	4h
Upper Flint	03130005	26	4i
Cahaba	03150202	26	4j
Mobile - Tensaw	03160204	26	4k

Paul E. Gregory and Paul K. Barten

University of Massachusetts Amherst – USDA Forest Service

www.forest-to-faucet.org

November 2008

