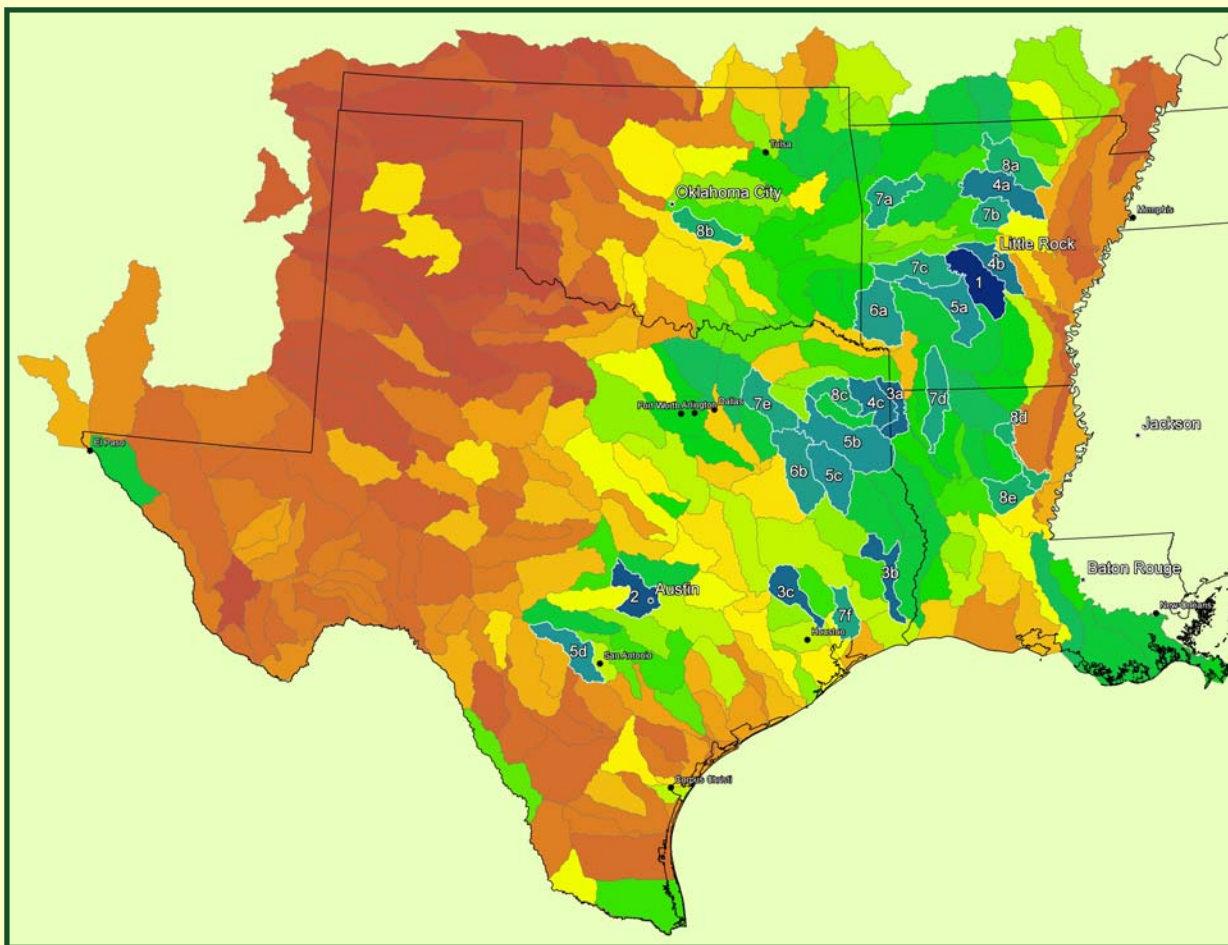


Step 4: Development pressure on private forests in watersheds important for drinking water supply

Top Ranking Watersheds



Watershed	HUC	Step 4 Score	Map #
Upper Saline	08040203	34	1
Austin-Travis Lakes	12090205	32	2
Cross Bayou	11140304	31	3a
Lower Neches	12020003	31	3b
West Fork San Jacinto	12040101	31	3c
Little Red	11010014	30	4a
Lower Arkansas-Maumelle	11110207	30	4b
Caddo Lake	11140306	30	4c
Upper Ouachita	08040102	29	5a
Middle Sabine	12010002	29	5b
Upper Angelina	12020004	29	5c
Medina	12100302	29	5d
Lower Little	11140109	28	6a
Upper Neches	12020001	28	6b
Frog-Mulberry	11110201	27	7a
Cadron	11110205	27	7b
Ouachita Headwaters	08040101	27	7c
Loggy Bayou	11140203	27	7d
Upper Sabine	12010001	27	7e
Lower Trinity	12030203	27	7f
Middle White	11010004	26	8a
Little	11090203	26	8b
Lake O'the Pines	11140305	26	8c
Lower Ouachita	08040207	26	8d
Little	08040304	26	8e

Paul E. Gregory and Paul K. Barten

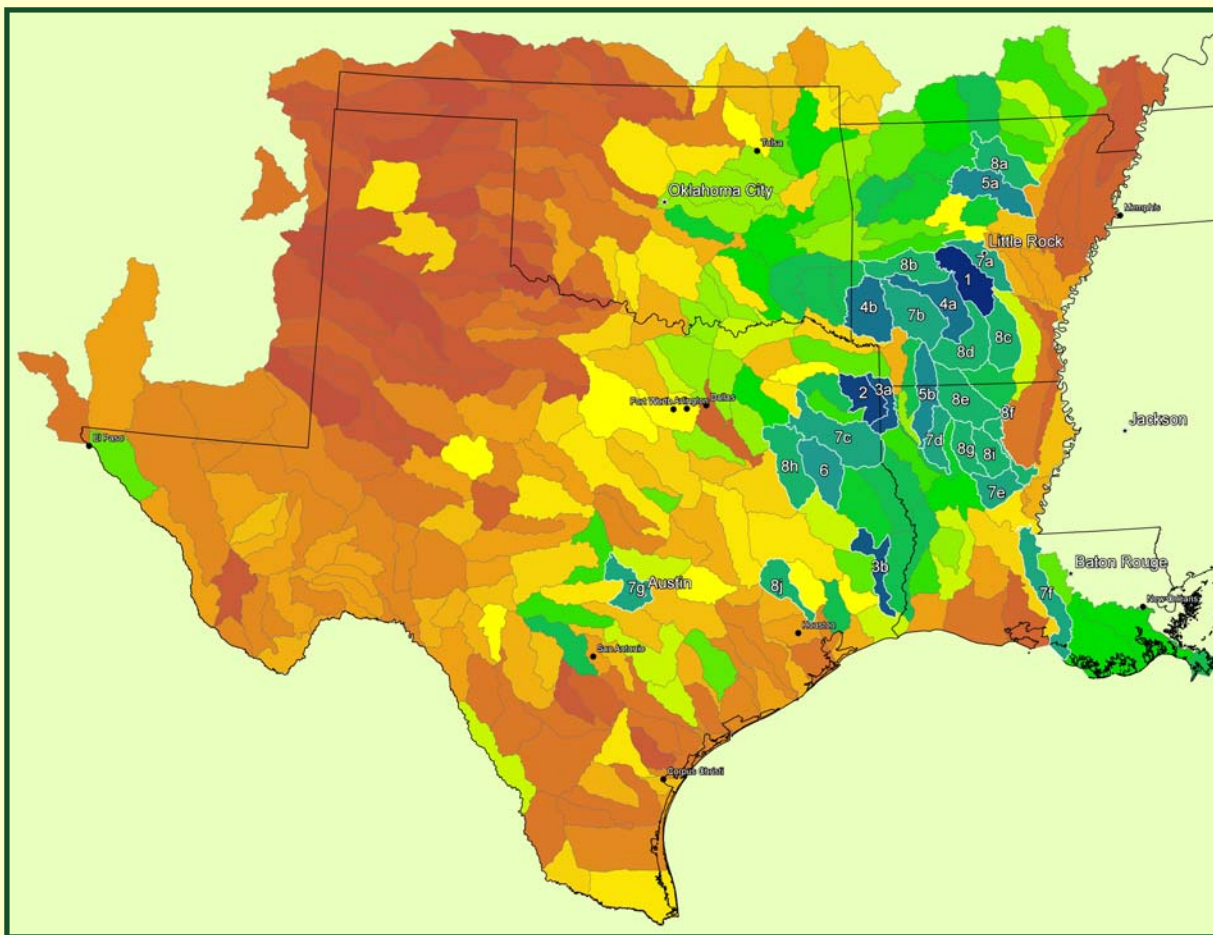
University of Massachusetts Amherst – USDA Forest Service

www.forest-to-faucet.org

November 2008



Step 3: Importance of watersheds with private forests for drinking water supply



Top Ranking Watersheds

Watershed	HUC	Step 3 Score	Map #
Upper Saline	08040203	28	1
Caddo Lake	11140306	27	2
Cross Bayou	11140304	26	3a
Lower Neches	12020003	26	3b
Upper Ouachita	08040102	25	4a
Lower Little	11140109	25	4b
Little Red	11010014	24	5a
Loggy Bayou	11140203	24	5b
Upper Angelina	12020004	23	6
Lower Arkansas-Maumelle	11110207	22	7a
Little Missouri	08040103	22	7b
Middle Sabine	12010002	22	7c
Black Lake Bayou	11140209	22	7d
Little	08040304	22	7e
Atchafalaya	08080101	22	7f
Austin-Travis Lakes	12090205	22	7g
Middle White	11010004	21	8a
Ouachita Headwaters	08040101	21	8b
Lower Saline	08040204	21	8c
Lower Ouachita-Smackover	08040201	21	8d
Bayou D'arbonne	08040206	21	8e
Lower Ouachita	08040207	21	8f
Dugdemonia	08040303	21	8g
Upper Neches	12020001	21	8h
Castor	08040302	21	8i
West Fork San Jacinto	12040101	21	8j

Paul E. Gregory and Paul K. Barten

University of Massachusetts Amherst – USDA Forest Service

www.forest-to-faucet.org

November 2008

